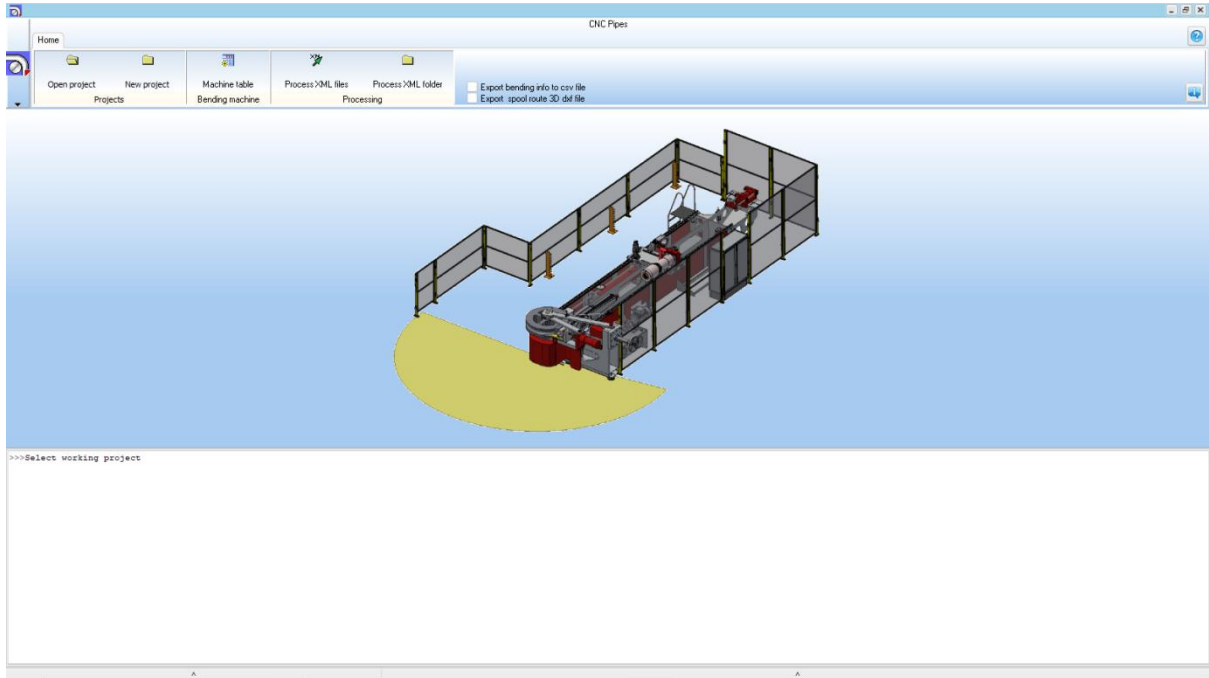


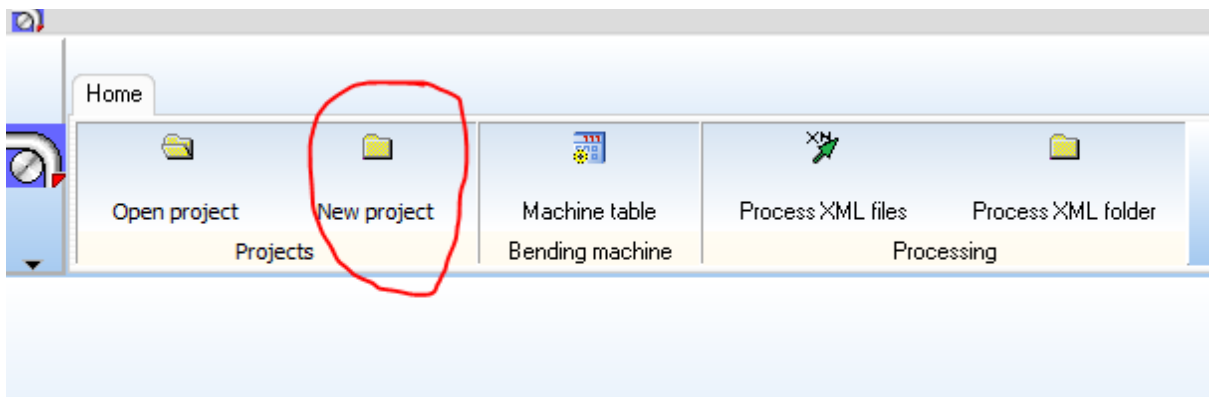
CNC Pipes

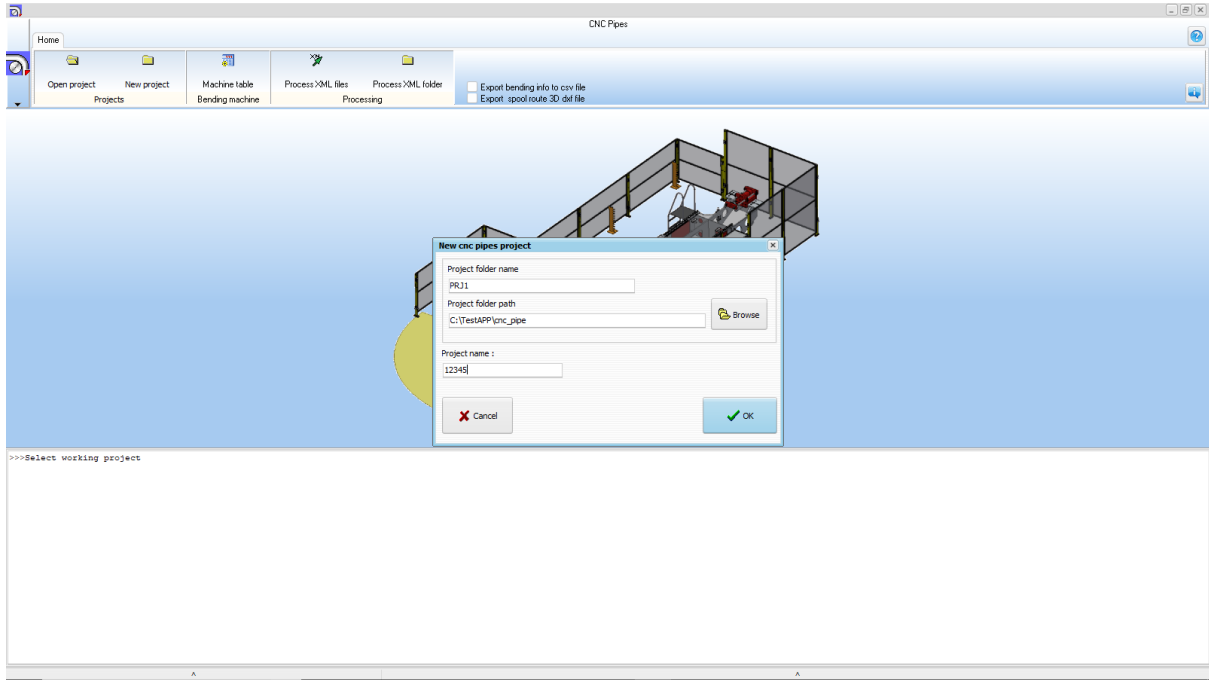
CNC Pipes , interface application between CADMATIC XML files and Transfluid TXT files



User guide

1. Create a new project





The project folder structure is like below

c:\TestAPP\cnc_pipe\PRJ1\.*			
Name	Ext	Size	
[.]		<DIR>	
[CADMATIC_XML]		<DIR>	
[PIPE_CNC]		<DIR>	
[REPORTS]		<DIR>	
PRJ1	prj	960	

CADMATIC_XML store unit subfolders for cadmatic files

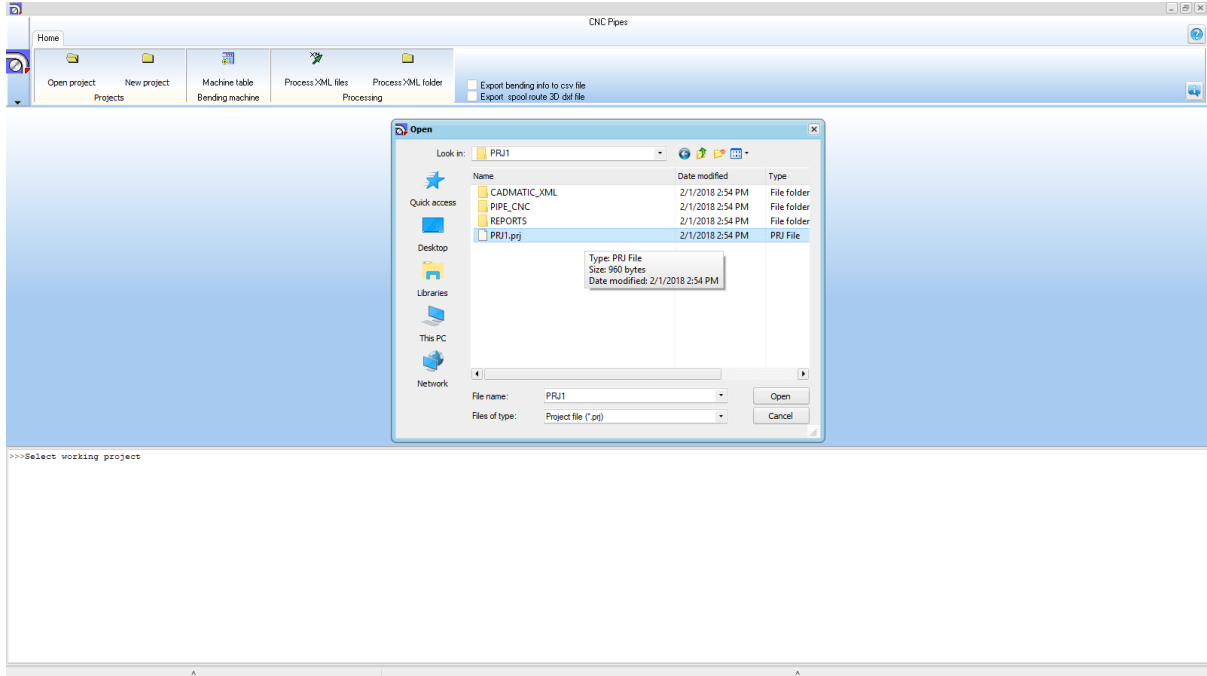
c:\TestAPP\cnc_pipe\PRJ1\CADMATIC_XML\.*			
Name	Ext	Size	
[.]		<DIR>	
[610108_303_Spools]		<DIR>	

c:\TestAPP\cnc_pipe\PRJ1\CADMATIC_XML\610108_303_Spools\.*				
Name	Ext	Size	Date	
[.]		<DIR>	02/01/20	
303-360L0103.03	xml	10,531	08/25/20	
303-360L0114.02	xml	10,631	06/21/20	
303-333L0134.03	xml	14,180	06/21/20	
303-333L0116.01	xml	13,997	06/21/20	
303-332L0105.02	xml	13,711	06/21/20	

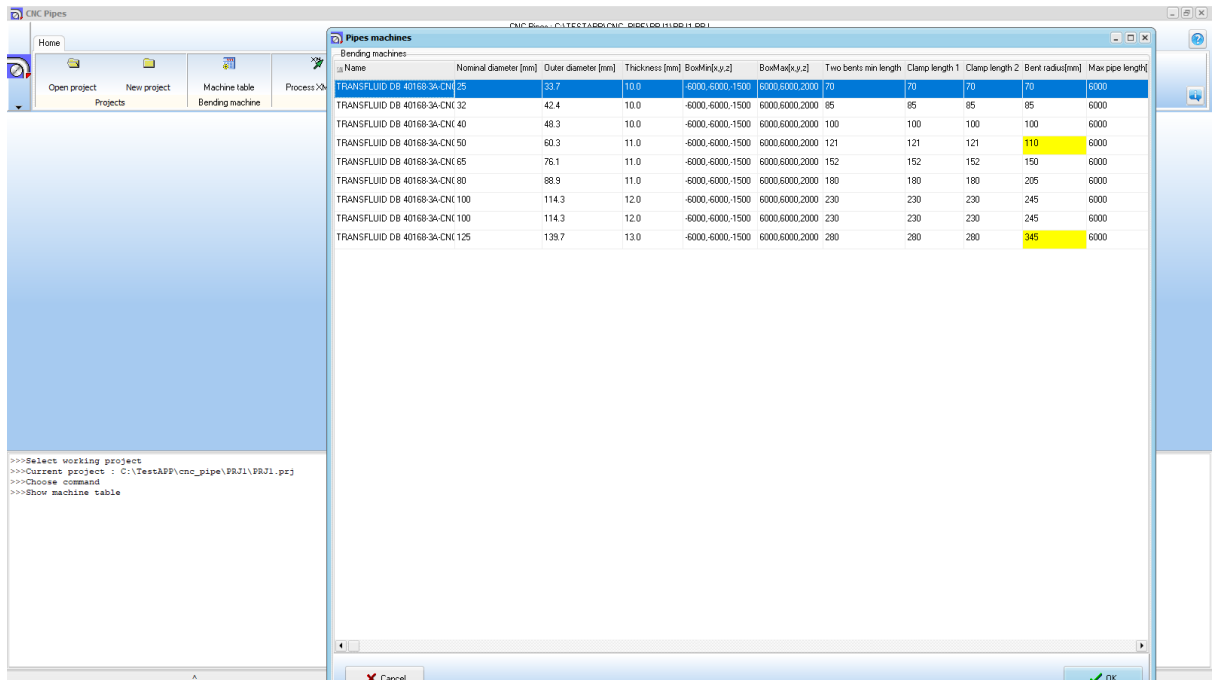
PIPE_CNC will store the corresponding txt files in same folders like input

REPORTS folder will store some reports info during processing of files.

2. Select current project



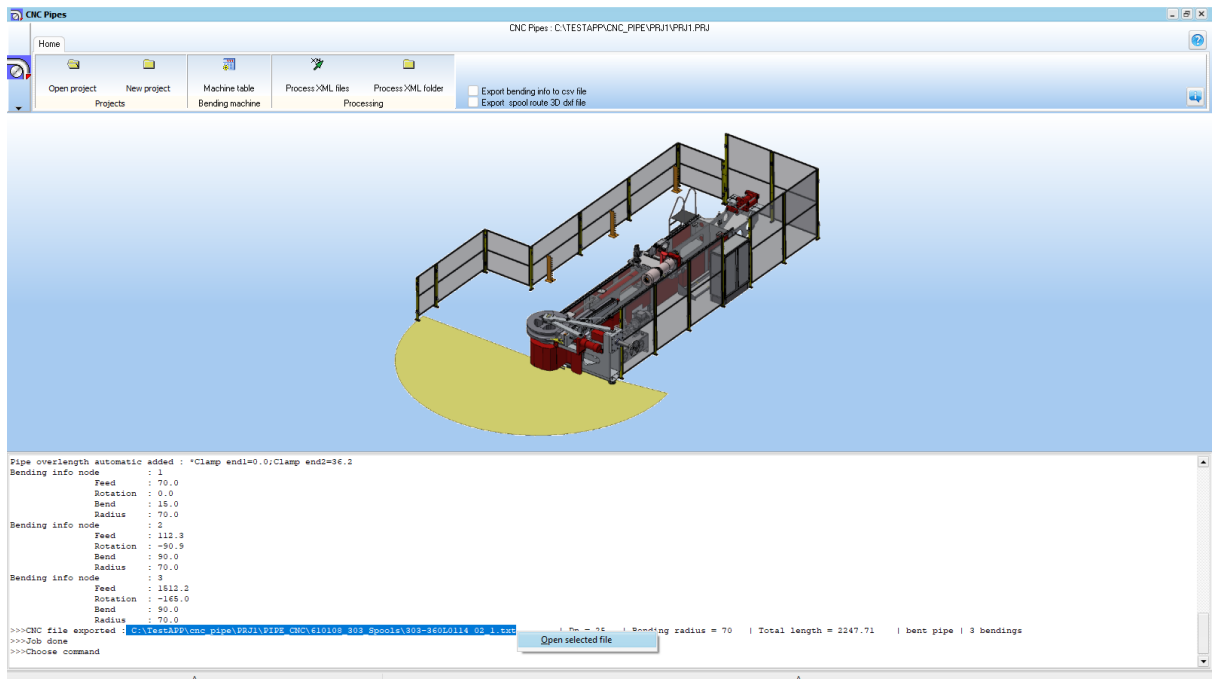
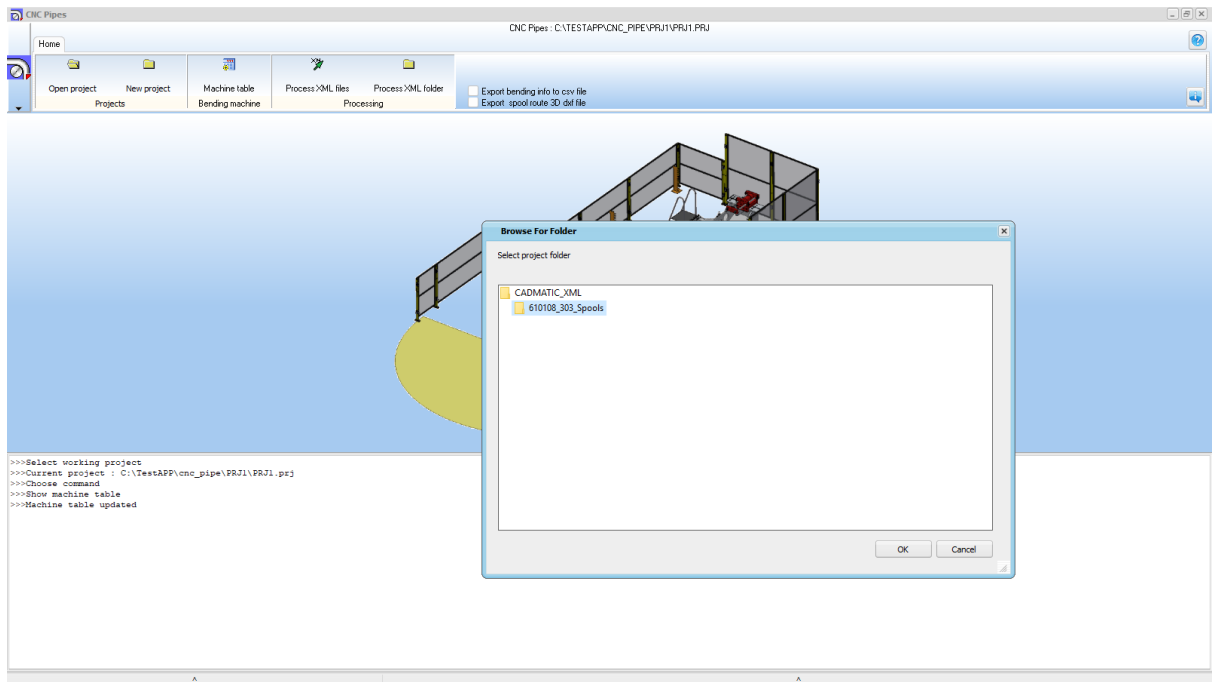
3. Machine table



For user are important only the yellow cells which define the bending radius to be used for DN50 and DN125

4. To run the interface are two options :

A: proces XML folder , will process all files from selected folder



Selected file path opened in default application

303-360L0114 02_1 - Notepad

File Edit Format View Help

Isometric drawing: 303-360L0114.02

Spool : 02

Cut : 1

Nr Bendings : 3
Total Length : 2247.71

Point Information Of Completed Pipe:

Point Id	X	Y	Z	Distance from previous point
0	12190.0	-282.0	1815.0	
1	12190.0	-325.0	1815.0	43.0
2	12190.0	-510.0	1765.4	191.5
3	13842.2	-510.0	1765.4	1652.2
4	13842.2	-895.0	1765.4	385.0

Bending Information:

Transport	Rotation	Bend	Length of bending
70.0	0.0	15.0	18.3
112.3	-90.9	90.0	110.0
1512.2	-165.0	90.0	110.0

(Bend without flanges)

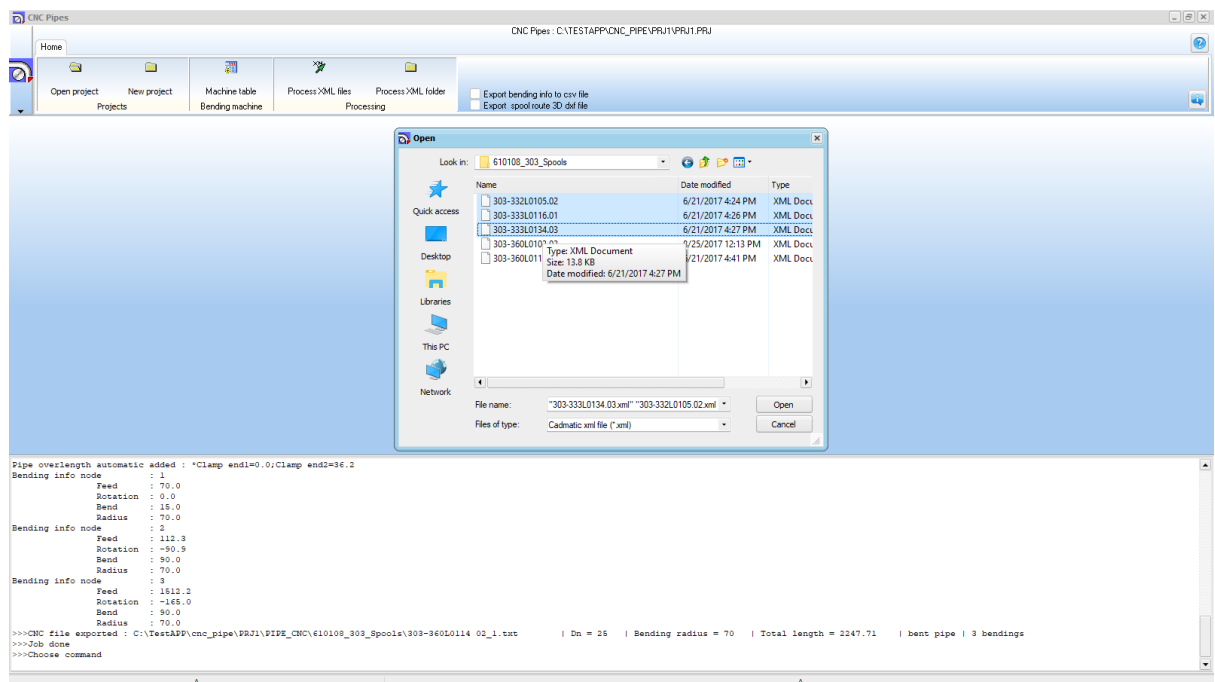
Used Bending Machine Information:

Name: TRANSFLUID DB 40168-3A-CNC
Line: 0
Nominal Size: 25
Bending Radius: 70.0
Maximum Pipe Length: Not Set
Maximum Set Length: Not Set
Min. length at begin: 70.0
Min. length at begin with flange: 70.0
Min. length between bendings....: 70.0
Min. length at end: 70.0
Min. length at end with flange..: 70.0
Spring Back for bendings: Not Set
Start to bend at: SHORTER
Compute Extra Length (cel): No
Bending Direction: LEFT

TXT files are exported in PIPE_CNC folder

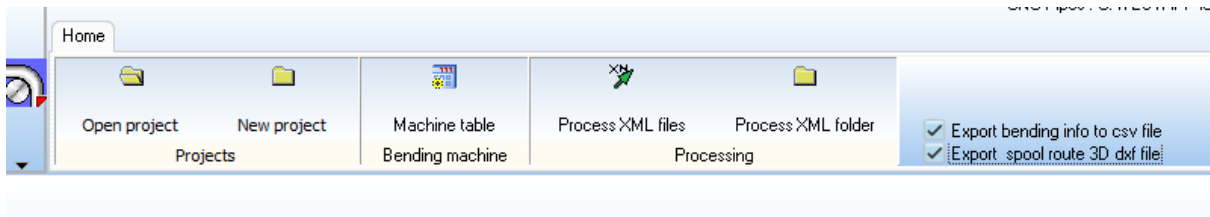
Name	Ext	Size	↓De
[.]		<DIR>	02/
303-332L0105_02_1	txt	1,538	02/
303-333L0116_01_1	txt	1,440	02/
303-333L0134_03_1	txt	1,641	02/
303-360L0114_02_1	txt	1,538	02/

B. By selecting files . The user can select which file will be processed by interface



During processing in prompt area a lot of info message are showed.

If you check the two export option a csv file whit all bending info is exported and also for each spoll a 3D dxf is exported whit the pipe route.



SoftCAD Solutions s.r.l

SOFTWARE PARK
23.Portului Street
Galati,Romania
Tel /Fax : 0236407034
Mobile : 0745657447
E-mail: softcad@softwarepark-galati.ro
<http://www.softcadsolutions.shorturl.com/>